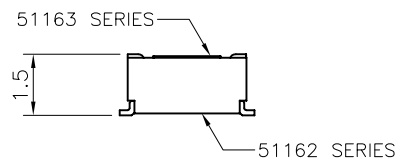
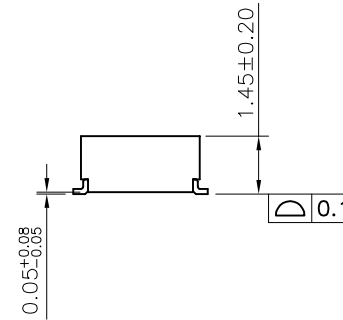


RECOMMENDED PCB LAYOUT
GENERAL TOLERANCE ±0.05

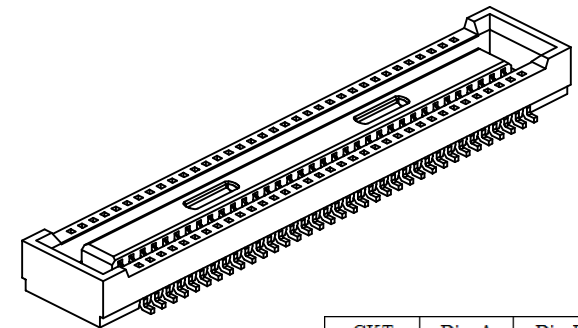
NOTES:

1. MATERIAL:
 - 1.1 HOUSING: THERMOPLASTIC, HIGH TEMP., UL94V-0. COLOR: BLACK.
 - 1.2 CONTACT: COPPER ALLOY.
2. FINISH:
 - 2.1 CONTACT:
 - 50~100u" NICKEL UNDERPLATING OVERALL.
 - 1: GOLD FLASH PLATING ON CONTACT AREA.
 - C: 15u" MIN GOLD PLATING ON CONTACT AREA.
 - M: 3u" MIN GOLD PLATING ON CONTACT AREA.
 - 2.2 SOLDER:
 - 50~100u" NICKEL UNDERPLATING OVERALL.
 - 1: GOLD FLASH PLATING ON SOLDER TAILS.
 - C: GOLD FLASH PLATING ON SOLDER TAILS.
 - M: GOLD FLASH PLATING ON SOLDER TAILS.
3. REFLOW SOLDER CAPABLE TO 260°C PER ACES SPEC.
4. SPEC. PLS REFER TO PS-51162-XXXXX-XXX
5. PACKAGE PLS REFER TO 51162-XXXXX-XX-TRP
6. PART NUMBER

51162-XXX	X	X-XXX	001: NONE
CKTS		PLATING	
PACKING		1: G/F OVERALL (LEAD FREE)	
0: TAPE & REEL		C: 15u" MIN GOLD ON CONTACT	
		M: 3u" MIN GOLD ON CONTACT	



MATED CONDITION



CKT	Dim A	Dim B
10	1.60	4.60
20	3.60	6.60
24	4.40	7.40
30	5.60	8.60
40	7.60	10.60
60	11.60	14.60
70	13.60	16.60

QUALITY SYMBOLS MAJOR CRITICAL GENERAL TOLERANCES (UNLESS SPECIFIED) X. ±0.5 .X ±0.25 .XX ±0.15 .XXX ±0.1 ANGLES ±2°	DRAWN BY	DATE		TITLE 0.4mm PITCH BTB PLUG CONN. SMT D/T TYPE
	GUOFEI	'23/03/08		
	CHECKED BY	DATE		
	BRAVE	'23/03/08		
	APPROVED BY	DATE		
	BRAVE	'23/03/08		
	UNITS		SIZE	DWG NO.
	mm		A4	51162-XXXXX-XXX
	SCALE	SHEET NO.	REV	PART NO.
	1:1	1 OF 1	D	SEE NOTES